

## Versatile Pencil and Pistol Grip Combination Hand-piece System

The MFR Desoldering Systems provide superior thermal transfer to the joint, effectively reflowing the solder and then quickly and efficiently removing all solder. SmartHeat® Technology makes through-hole desoldering easy and safe from board damage. The state-of-the-art hand-piece can be adjusted from a pencil to a gun with a simple press of a button. Operators can find the most comfortable and efficient position to tackle the rework challenge. The paper solder collection chamber and filter system is quick and easy to change, and provides low cost maintenance.

Two MFR Desoldering Systems are available. The MFR-DSX system requires shop air for desoldering. If shop air is not available, the MSF-DSI features an internal vacuum pump.

Part No.	Description
<b>MFR-DSX</b>	Desolder System, External Air
<b>MFR-DSI</b>	Desolder System, Internal Air Pump
<b>System Includes</b>	
<b>MFR-PS2X</b>	Switched Two-Port Universal Voltage Power Supply, External Air (MFR-DSX only)
<b>MFR-PS2K</b>	Switched Two-Port Universal Voltage Power with Internal Air Pump (MFR-DSI only)
<b>MFR-HDS</b>	Desolder Hand-piece
<b>MFR-WSDS</b>	Desolder Workstand



## Complete MFR System for Soldering, Desoldering and Rework

The MFR Soldering / Desoldering Systems include both the innovative desoldering hand-piece and the solder/rework cartridge hand-piece to cover all your rework needs.

Two MFR Soldering / Desoldering Systems are available. The MFR-SDX system requires shop air for desoldering. If shop air is not available, the MFR-SDI features an internal pump that provides suction.

Part No.	Description
<b>MFR-SDX</b>	Solder / Desolder System, External Air
<b>MFR-SDI</b>	Solder / Desolder System, Internal Air Pump
<b>Systems Includes</b>	
<b>MFR-PS2X</b>	Switched Two-Port Universal Voltage Power Supply, External Air (MFR-SDX only)
<b>MFR-PS2K</b>	Two-Port Universal Voltage Power with Internal Air Pump (MFR-SDI only)
<b>MFR-HSR</b>	Soldering and Rework Hand-piece
<b>MFR-WSSR</b>	Soldering Workstand
<b>MFR-HDS</b>	Desoldering Hand-piece
<b>MFR-WSDS</b>	Desoldering Workstand

See Accessories page 27



Uses DFP cartridges, see page 19

# Soldering Cartridges

for MFR-SRC System and MFR-HSR Hand-piece



	<b>SFP-BVL10</b> Bevel Cartridge 60° 1.0mm (.04")		<b>SFP-CN04</b> Chisel Cartridge 30° Bent 1.5mm (.06")
	<b>SFP-CH10</b> Chisel Cartridge 30° 1.0mm (.04")		<b>SFP-CN05</b> Conical Cartridge 0.5mm (.02")
	<b>SFP-CH15</b> Chisel Cartridge 30° 1.5mm (.06")		<b>SFP-CNB04</b> Conical Cartridge Bent 0.4mm (.016")
	<b>SFP-CH20</b> Chisel Cartridge 30° 2.0mm (.08")		<b>SFP-CNB05</b> Conical Cartridge Bent 0.5mm (.02")
	<b>SFP-CH25</b> Chisel Cartridge 30° 2.5mm (.10")		<b>SFP-CNL04</b> Conical Cartridge Long Reach 0.4mm (.016")
	<b>SFP-CH50</b> Chisel Cartridge 30° 5.0mm (.20")		<b>SFP-DRH05</b> Drag Soldering Cartridge Hook, 0.5mm (.02")
	<b>SFP-CHB15</b> Chisel Cartridge 30° Bent 1.5mm (.06")		<b>SFP-DRH15</b> Drag Soldering Cartridge Hoof, 1.5mm (.06")
	<b>SFP-CHL20</b> Chisel Cartridge 60° Long Reach 1.57mm (.062")		<b>SFP-DRH35</b> Drag Soldering Cartridge Hook, 3.5mm (.14")
			<b>SFP-DRK50</b> Drag Soldering Cartridge Knife, 5.0mm (.20")

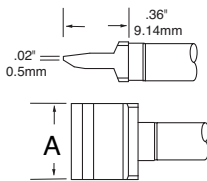
The second digit denotes substrate material (damage tolerance). **F** = FR4 / Glass Fiber, for most standard applications. Two other series are also available, just replace F with either T or C. **T** = Temperature Sensitive, **C** = Ceramic

# Rework Cartridges

for MFR-SRC System and MFR-HSR Hand-piece

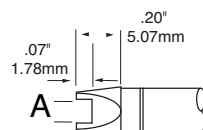


## BLADE CARTRIDGES



Part No.	Description	A
RFP-BL1	Blade Cartridges	10mm (.4")
RFP-BL2	Blade Cartridges	16mm (.63")
RFP-BL3	Blade Cartridges	22mm (.87")

## SLOT CARTRIDGES

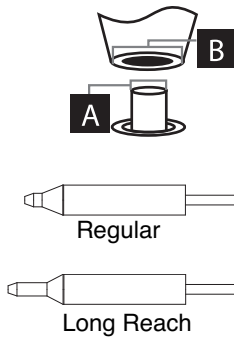


Part No.	SMT TYPE	A
RFP-SL1	0805 Chip Package	2.34mm (.092")
RFP-SL2	1206 Chip Package	3.48mm (.137")

The second digit denotes substrate material (damage tolerance). **F** = FR4 / Glass Fiber, for most standard applications. Also available in C Series, **C** = Ceramic

# Desoldering Tips

for MFR-DSX,-DSI, -SDX and -SDI Systems



Part No.	Description	□ A	□ B
DFP-CN2	Desolder Tip	0.67mm (.026")	0.67mm (.026")
DFP-CN3	Desolder Tip	0.79mm (.031")	2.05mm (.080")
DFP-CN4	Desolder Tip	1.05mm (.041")	2.30mm (.090")
DFP-CN5	Desolder Tip	1.31mm (.052")	2.65mm (.104")
DFP-CN6	Desolder Tip	1.55mm (.061")	2.85mm (.112")
DFP-CN7	Desolder Tip	2.44mm (.096")	3.65mm (.143")
DFP-CNL3	Desolder Tip Long Reach	0.79mm (.031")	2.05mm (.080")
DFP-CNL4	Desolder Tip Long Reach	1.05mm (.041")	2.30mm (.090")
DFP-CNL5	Desolder Tip Long Reach	1.31mm (.052")	2.65mm (.104")

The second digit denotes substrate material (damage tolerance). **F**= FR4 / Glass Fiber, for most standard applications. Also available in C Series, **C** = Ceramic.

# Soldering Tips

for MFR-PST and PS-800E Systems with MFR-CA2 and PS-CA2 coils

**EASY ACCESS SOLDERING TIPS** for longer reach touch up applications

	<b>SFV-CN05A</b> Conical Solder Tip 0.5mm (.02")		<b>SFV-CH18A</b> Fine Solder Tip 1.8mm (.07")
	<b>SFV-CNL10A</b> Conical Long Solder Tip 1.0mm (.04")		<b>SFV-CH15A</b> Chisel Solder Tip 1.5mm (.06")
	<b>SFV-CH50A</b> Chisel Solder Tip 5.0mm (.197")		<b>SFV-CNL03A</b> Conical Long Solder Tip 0.3mm (.01")
	<b>SFV-CH25A</b> Chisel Solder Tip 2.5mm (.10")		<b>SFV-CNB04A</b> Conical Bent Solder Tip 0.4mm (.016")
	<b>SFV-CH10A</b> Chisel Solder Tip 1.0mm (.04")		<b>SFV-DRH430A</b> Drag Solder Tip Hoof, 3.0mm (.12")
	<b>SFV-DRH420A</b> Hoof Solder Tip 45° 2.0mm (.08")		<b>SFV-DRK45A</b> Knife Solder Tip 4.5mm (.177")
			<b>SFV-DRK30A</b> Knife Solder Tip 3.0mm (.12")

**SOLDERING TIPS** for heavy duty applications

	<b>SFV-CH10</b> Chisel Solder Tip 30° 1.0mm (.04")		<b>SFV-CNL10</b> Conical Long Solder Tip 1.0mm (.04")
	<b>SFV-CH20</b> Chisel Solder Tip 2.0mm (.08")		<b>SFV-CNL14</b> Conical Long Solder Tip 1.4mm (.056")
	<b>SFV-CH25</b> Chisel Solder Tip 2.5mm (.10")		<b>SFV-DRH20</b> Conical Bevel Solder Tip 2.0mm (.08")